

# Corn

<b>Product(s) Used:</b>	Nutriplant™ SD
<b>Location:</b>	Marion, South Dakota
<b>Notes:</b>	Photo taken on July 10th
<b>Results:</b>	Corn Chopped on August 10th

**Control**

**Nutriplant™ SD**





# Corn

<b>Product(s) Used:</b>	Nutriplant™ SD
<b>Location:</b>	Melrose, Minnesota
<b>Results without Nutriplant™ SD:</b>	165 -170 bushels / acre
<b>Results with Nutriplant™ SD:</b>	175-180 bushels / acre

**Nutriplant™ SD**



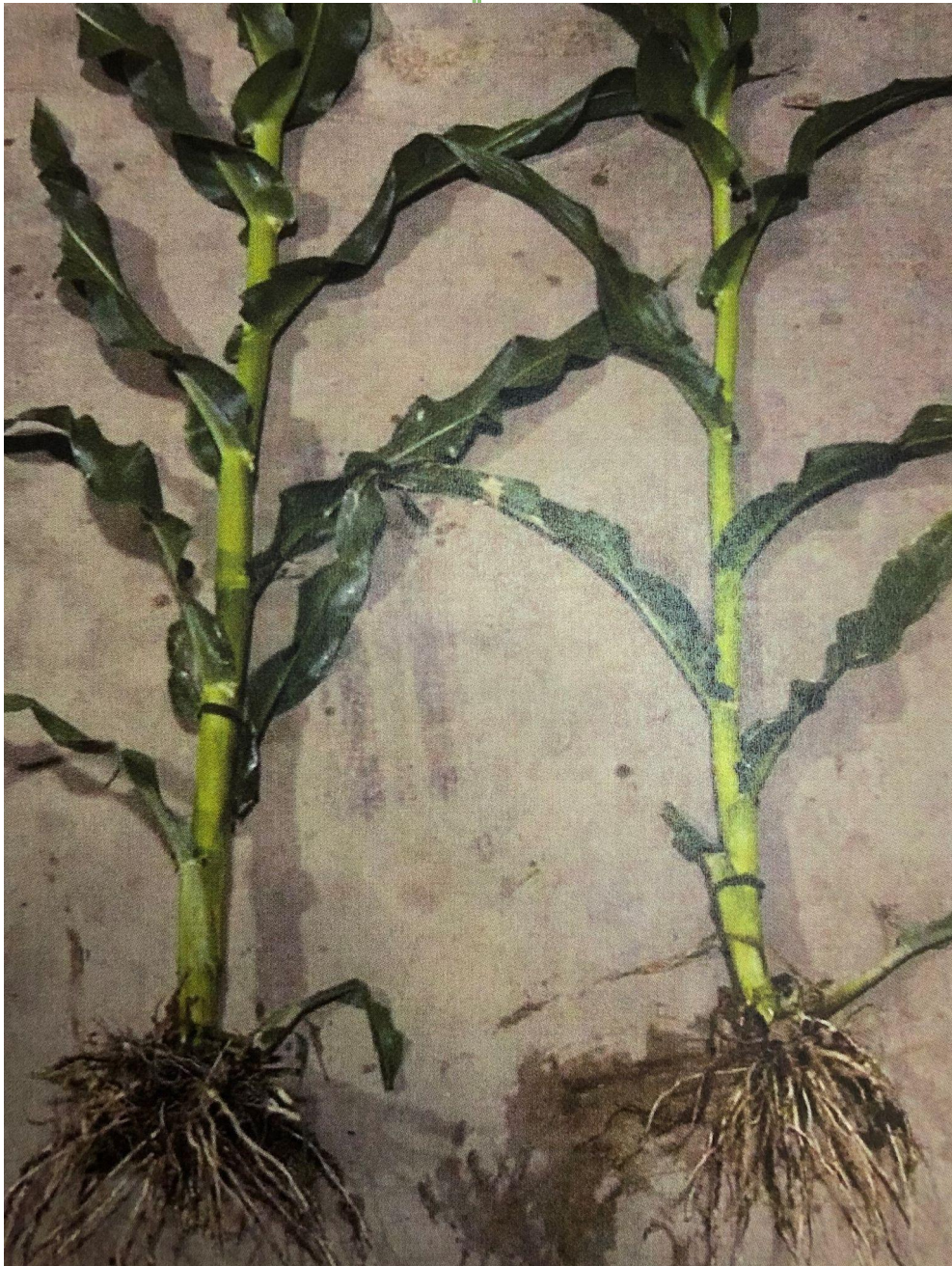
**Control**



# Corn

<b>Product(s) Used:</b>	Nutriplant™ SD
<b>Location:</b>	Melrose, Minnesota
<b>Results without Nutriplant™ SD:</b>	165 -170 bushels / acre
<b>Results with Nutriplant™ SD:</b>	175-180 bushels / acre

**Nutriplant™ SD**



**Control**

# Corn

<b>Product(s) Used:</b>	Nutriplant™ SD, Nutriplant™ SD, and APSA 80
<b>Location:</b>	Central Minnesota
<b>County / Township:</b>	Sibley / Transit
<b>Results:</b>	With: 196 bushels/acre Without: 193 bushels/acre

<b>Product(s) Used:</b>	Nutriplant™ AG and APSA 80
<b>Location:</b>	Central Minnesota
<b>County / Township:</b>	Sibley / Transit
<b>Results:</b>	With: 227 bushels/acre Without: 211 bushels/acre

<b>Product(s) Used:</b>	Nutriplant™ SD
<b>Location:</b>	Central Minnesota
<b>County / Township:</b>	Sibley / Alfsbrg
<b>Results #1:</b>	With: 193 bushels/acre Without: 184 bushel/acre
<b>Results #2:</b>	With: 187 bushels/acre Without: 184 bushels/acre